



# REMEMBER THE TRENCH SAFETY

TRENCH SAFETY SOLUTIONS



***TO SERVE OTHERS WITH EXCELLENCE***

**844-TxFirst**  
**(844-893-4778)**

**TexasFirstRentals.com**

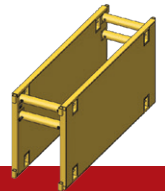
Texas  First

 **Rental**  
STORE



## STEEL TRENCH BOXES

Texas First Trench Safety steel boxes aid and assist with uniquely complex projects. We offer the highest level of workplace protection and have a full line readily available for valued customers like you. With one of the newest fleets in the state, these models of shields range in heights up to 10' and lengths up to 24', with several variations to fit your needs and scope of work. We also hold one of the widest ranges of box spreader material in the industry.



### 4" MEDIUM DUTY

Model	Height	Length	Pipe Clearance	Weight	PSF	Maximum Depth Rating			
						A-25	B-45	C-60	C-80
XTS-4M-1016	10'	16'	84"	9,046 lbs	973	42'	26'	18'	17'
XTS-4M-1020	10'	20'	84"	10,216 lbs	779	35'	22'	16'	14'
XTS-4M-412	4'	12'	16"	3,409 lbs	2,627	52'	52'	44'	34'
XTS-4M-416	4'	16'	16"	4,248 lbs	1,395	52'	33'	24'	20'
XTS-4M-420	4'	20'	16"	5,086 lbs	965	34'	20'	15'	12'
XTS-4M-812	8'	12'	64"	5,701 lbs	1,771	52'	44'	34'	26'
XTS-4M-816	8'	16'	64"	7,165 lbs	1,339	52'	34'	24'	20'
XTS-4M-820	8'	20'	64"	8,726 lbs	965	38'	23'	20'	14'

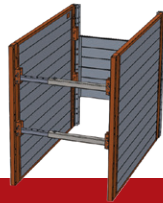
### 6" MEDIUM DUTY

Model	Height	Length	Pipe Clearance	Weight	PSF	Maximum Depth Rating			
						A-25	B-45	C-60	C-80
XTS-6M-1020	10'	20'	84"	12,135 lbs	1,224	52'	32'	24'	20'
XTS-6M-1024	10'	24'	84"	14,274 lbs	940	41'	24'	21'	15'
XTS-6M-424	4'	24'	16"	6,539 lbs	956	38'	22'	16'	13'
XTS-6M-820	8'	20'	64"	9,902 lbs	1,390	52'	35'	25'	21'
XTS-6M-824	8'	24'	64"	11,444 lbs	945	40'	25'	18'	14'



## STEEL FRAMED ALUMINUM SHIELD

Our steel-framed, high-grade aluminum trench shields are flexible and lightweight creating an innovative alternative to steel trench boxes. Comprised of panels, vertical rails, corners, and spreaders, Texas First has this modular design readily available in multiple sizes and configurations that can be adjusted to custom-fit various trench dimensions.



### STEEL FRAMED ALUMINUM SHIELD

Model	Capacity (PSF)	Maximum Depth Rating				Vertical Pipe Clearance	Estimated Weight
		A-25	B-45	C-60	C-80		
XAMS-608	1,215	30'	25'	20'	15'	25"	892 lbs
XAMS-808	1,212	30'	25'	20'	15'	36"	1,245 lbs
XAMS-810	929	25'	20'	15'	12'	36"	1,530 lbs



## TWF SLIDE RAILS

Texas First Rentals Trench Safety Slide Rail Shoring by TWF is a modular component system that utilizes a "dig and push" method, which greatly reduces the risk of cave-in and trench collapse associated with open trench excavations. One benefit of this, is that it increases safety for adjacent structures and for personnel. With Texas First Rentals variety of modular components, the system can be utilized in a wide range of applications to include unique designs of 2, 3, or 4 sided pits with clear open span.

Item	Description
TRENCH SLIDE RAILS	SINGLE & DOUBLE RAIL



## VERTICAL HYDRAULIC SHORING

Let Texas First handle your linear trench needs with our vertical hydraulic trench jacks, that are light weight, cost-effective, and efficient. Ideal for spot bracing repairs and/or inspections, speed shores are an industry-leading solution to protect against trench cave-ins. Texas First has rail heights ranging from 1 1/2' to 20' and covering widths from 17" to 144".



Item	Item
KIT: 1.5' SHORE 22-36" CYL	KIT: 12' SHORE 22-36" CYL
KIT: 1.5' SHORE 28-46" CYL	KIT: 12' SHORE 28-46" CYL
KIT: 1.5' SHORE 34-55" CYL	KIT: 12' SHORE 34-55" CYL
KIT: 1.5' SHORE 52-88" CYL	KIT: 12' SHORE 52-88" CYL
KIT: 3.5' SHORE 22-36" CYL	KIT: 16' SHORE 22-36" CYL
KIT: 3.5' SHORE 28-46" CYL	KIT: 16' SHORE 28-46" CYL
KIT: 3.5' SHORE 34-55" CYL	KIT: 16' SHORE 34-55" CYL
KIT: 3.5' SHORE 52-88" CYL	KIT: 16' SHORE 52-88" CYL
KIT: 5' SHORE 22-36" CYL	24" EXT CYL
KIT: 5' SHORE 28-46" CYL	42" EXT CYL
KIT: 5' SHORE 34-55" CYL	56" EXT CYL
KIT: 5' SHORE 52-88" CYL	FINN FORM BOARD 4' X 4'
KIT: 7' SHORE 22-36" CYL	FINN FORM BOARD 4' X 8'
KIT: 7' SHORE 28-46" CYL	FINN FORM BOARD 4' X 12'
KIT: 7' SHORE 34-55" CYL	HAND PUMP FOR SHORING
KIT: 7' SHORE 52-88" CYL	RELEASE TOOL 48"
KIT: 8' SHORE 22-36" CYL	RELEASE TOOL 96"
KIT: 8' SHORE 28-46" CYL	
KIT: 8' SHORE 34-55" CYL	
KIT: 8' SHORE 52-88" CYL	

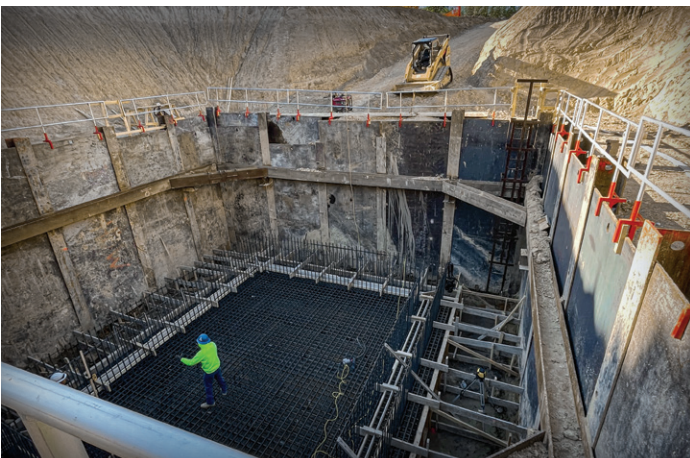


## BEAM & PLATE

### BEAM AND PLATE SYSTEMS

Beam and Plate Systems offer large free span work areas and a cost-effective system for extended duration projects.

- Pilot holes are drilled for the beams, and beams are then inserted through those holes.
- Steel plates are then inserted between the beam's flanges to provide soil support.
- Can be installed in a "dig and push" method or can be vibrated into place prior to excavation
- Can be used for one, two, three or four-sided excavation



## ROAD PLATES

Specially manufactured to use as temporary covers for trenches or holes in the roadway, Texas First steel road plates allow your construction team to easily reopen the road to regular traffic. Our heavy-duty road plates are equipped with single-point center lifting capabilities for improved balance and control. These are a minimum ASTM-A-36 grade steel with sizes ranging from as small as 5'x8' and up to an 8'x20' with various sizes in between and are all 1" thick.

Description	Weight
STEEL 1" PLATE 5' X 8'	1,634 lbs
STEEL 1" PLATE 5' X 10'	2,042 lbs
STEEL 1" PLATE 6' X 10'	2,545 lbs
STEEL 1" PLATE 8' X 10'	3,267 lbs
STEEL 1" PLATE 8' X 12'	3,921 lbs
STEEL 1" PLATE 8' X 15'	5,228 lbs
STEEL 1" PLATE 8' X 20'	6,534 lbs



## OVERLAPPING STEEL SHEETING

Texas First Trench Safety carries KD6/8 overlapping steel sheeting to fulfill the unique needs of each project. It provides an excellent alternative to go around those existing utilities, offers end protection, and comes in lengths from 12' to 24'.



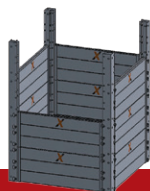
## MANHOLE SHIELDS

At Texas First, we offer a broad range of manhole shields that are commonly used for manhole installations, point inspections, taps, repairs, or box installations. We carry both round corrugated and square with optional cutout doors and legs. Diameters consist of 8.5' and 10', with heights of 4' and 8'.



## ALUMINUM MODULAR PANELS

With an extensive modern fleet, allow us to serve you on your next underground utility project with the Texas First dynamic BAB (Build A Box) system. Designed for easy assembly and transport, these aluminum modular panels are lightweight yet provide the depth rating you need to get the job done safely.



### ALUMINUM DEPTH RATING CHART

Model	Weight	Maximum Depth Rating			
		A-25	B-45	C-60	C-80
XAP-2X10	146 lbs	30'	30'	21'	16'
XAP-2X12	174 lbs	30'	20'	15'	12'
XAP-2X4	62 lbs	30'	30'	30'	30'
XAP-2X6	90 lbs	30'	30'	30'	30'
XAP-2X8	118 lbs	30'	30'	25'	25'

## SAFETY SYSTEM WORK ZONE



### FALL ARREST SYSTEM

This TWF system features high-quality, lightweight aluminum extrusions and easily adjustable clamping screws. The TWF Shoring Box Platform System with Fall Arrest Post has been specifically designed and engineered to provide access and egress to (or from) an excavation and can be used on standard aluminum or steel shoring panels with minimum thickness of 50mm and up to 200mm.

Also from TWF, the davit arm was designed so that it could be easily repositioned and helps minimize the frequency of repositioning. The system meets OSHA 1926 Subpart R, Protection Systems Criteria, (d) fall arrest systems. The PRO-3G Davit Shoring Kit is a fully functional fall protection device and acts as an operating retrieval winch.



844-TxFirst  
(844-893-4778)

TexasFirstRentals.com

## PIPE TESTING & CONFINED SPACE EQUIPMENT

### GAS MONITORS

When you need OSHA compliant 4-gas monitors for detecting oxygen, carbon monoxide, hydrogen sulfide, and combustible gases, Texas First Trench Safety is your solution. Tested and calibrated before every delivery, you can rely on us to ensure safe confined space entry.

### RETRIEVAL SYSTEMS

For a simple manhole in the middle of a busy street, to industrial and municipal plant situations, Texas First has you covered. We carry a wide manufacturer for confined space retrieval systems, including DBI/Sala, and French Creek. Standard 7' tall tripods with winch and self-retracting lifelines are ready for you.

### PIPE PLUGS

From Plug Technologies, Lansas and Cherne, pipe plugs at Texas First will take care of you. Durable, rugged, and inspected upon every rental, we are ready for your next pipe pressure testing. From leak detection, blocking, flow thru, and our valued mechanical/general plumbing, come see us for your next plug project.

### VENTILATION & BLOWERS

Here at Texas First, we offer a variety of ventilating blowers for sale or rent manufactured by Allegra and Hurco Technologies. Our rental and sale units come equipped with 110/220-volt electric motors, or 12v electric motors or gas engine powered units. The axial fan, centrifugal fan, or propeller driven air ends assists in ventilating a single manhole or large diameter pipe. Ventilators may be used for additional purposes such as line stringing and smoke testing.

### HYDROSTATIC TEST PUMPS

Texas First Trench Safety rents and sells a full line of hydro test pumps from twin diaphragm pumps used for standard pressures and water volume testing or four diaphragm pumps for high pressure and high-water volume testing. Pressurizing and testing water lines or sewer force mains are pertained to "AWWA Standard C605, Installation of PVC Pressure Pipe," and "C600 Installation of Ductile-Iron Water Mains". Honda or Briggs & Stratton gasoline engines are available.



### MANHOLE VACUUM TESTERS

Texas First also rents and sells a full line of manhole vacuum testers to include bladder and plate styles. Vacuum air manhole testers provide efficiency and accurate testing of new, existing, or rehabilitated manholes per "ASTM C1244". Bladder style testers are designed to seal the inside diameter of the manhole cone whereas the flat plate style tester is designed to seal the manhole cone top surface. Another option is the vacuum generator which converts a standard air compressor into a vacuum source.

### MANDRELS & DEFLECTION GAUGES

Proper use of these gauges helps ensure that flexible pipe has been properly bedded and backfilled, hence not deflected. Pipe deflection gauges are utilized to test sewer pipe for out-of-roundness and Texas First offers single size of multi-size kits with SDR 26 and SDR 35 specs.

### PIPE TESTING AND CONFINED SPACE EQUIPMENT

#### Item

SEWER PLUG 4-6"
TEST PLUG 4-6"
SEWER PLUG 6-10"
TEST PLUG 6-10"
SEWER PLUG 8-12"
TEST PLUG 8-12"
SEWER PLUG 12-24"
TEST PLUG 12-24"
SEWER PLUG 15-30"
TEST PLUG 15-30"
SEWER PLUG 24-48"
TEST PLUG 24-48"
MANDREL 8" SA SPEC
MANDREL 10" SA SPEC
MANDREL 12" SA SPEC
ROPE HOSE
TRIPLE HOSE
TEST PANEL
HYD TEST PUMP
HYD TEST PUMP HV
RIP CORDS
27.5-32" MANHOLE BLADDER TEST
38" PLATE TEST
MANHOLE BLOWER GAS
MANHOLE BLOWER ELECTRIC
MANHOLE TRIPOD
ROPE AND REEL
WIRE REEL
VACUUM GENERATOR
PARACHUTE 8-12"
PIPE LASER
GAS MONITOR



## SPECIALTY EQUIPMENT



### BEDDING BOXES

Prevent material loss on your jobsite with Texas First's highest-quality bedding boxes, also known as stone boxes. With a capacity of 9 cubic yards, our steel-constructed bedding boxes are designed to hold bulk debris like excess road base, dirt, gravel, and sand with dual pull bars for easy operation.

Model	Description
XBB-9H	9 CUBIC YARD BEDDING BOX



### HYDRAULIC PIPE PULLER

Pipe pullers are used to "join" large diameter concrete and culvert pipe to reduce bell and joint damage. Texas First carries the JB Pipe Puller, manufactured by Basinger Manufacturing. The solid bars replacing the old style of typical cable wires eliminates the potential of fraying or snapping when stress is applied. Standard-duty units can pull pipe up to 10' in diameter (28,000 lbs), with heavy-duty units pulling pipe up to 14' in diameter (40,000 lbs).



### BARRIER CLAMPS

Texas First provides Kenco Corporation barrier lifts, which offer a safe, easy, and efficient method for the lifting and placing of concrete barrier walls. The Kenco lifts have exclusive elastomeric grips that provide superior gripping performance with their polyethylene complex. Capacities from 1,500 to 30,000 lbs include the Texas Low Profile Barrier Wall.

## CONSTRUCTION LASERS

### SERVICE AND LASER REPAIR

The team at our local laser service center has over 20 certified years of experience with all makes and models, including parts. A rental unit can also be accommodated.



### PIPE LASERS

Pipe lasers are predominantly used in the underground industry by contractors, general contractors, and municipalities for the installation of storm drainage systems, sewer pipes, water line, lift stations, and manhole placements. Texas First Trench Safety offers brands like Topcon, Leica, and Spectra Precision by Trimble.

### ROTATING LASERS

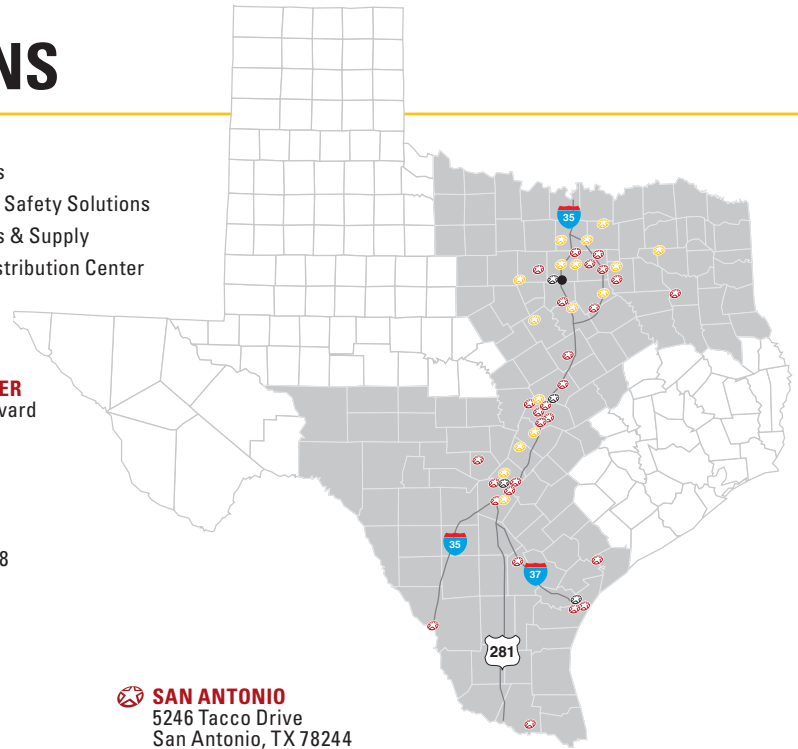
Rotating Lasers are used to provide a desired slope or elevation. Multipurpose rotating lasers are designed for contractors like highway construction contractors who are concerned about the quality of their projects.

### AUTO LEVELS, TRIPODS, AND RODS

Providing a high degree of control for leveling and monitoring applications, auto levels are ideal for jobsite elevation control and bringing in elevations from remote locations to the jobsite. They can also be used to monitor built-in-place structures and to measure small elevation changes over time.

Texas First tripods and grade rods can be rented or purchased, ranging from sturdy wooden and fiberglass tripods to economical aluminum models. Grade rods include sturdy, 25' grade rods and 16' aluminum grade rods.

# OUR BRANCH LOCATIONS



**ALEDO**  
5600 E. Interstate 20 Svc Rd  
Aledo, TX 76008  
682-730-2445

**ARLINGTON**  
2935 W. Division St.  
Arlington, TX 76012  
817-275-3400

**AUSTIN**  
6005 S. 183 Hwy NB  
Austin, Texas 78744  
512-292-5050

**BELTON**  
2625 Digby Drive  
Belton, TX 76513  
254-217-8383

**BULVERDE**  
29786 U.S. Highway 281 N.  
Bulverde, TX 78163  
830-980-9007

**BURLESON**  
3445 South Burleson Blvd.  
Alvarado, TX 76009  
817-809-8255

**CORPUS CHRISTI**  
5529 Transport Industrial Drive  
Corpus Christi, TX 78405  
361-949-5240

**CORPUS CHRISTI**  
1325 S. Padre Island Drive  
Corpus Christi, TX 78416  
361-600-6999

**DENTON**  
5201 North I-35  
Denton, TX 76207  
940-442-5321

**FATE**  
2371 E. Interstate 30  
Fate, TX 75087  
214-556-5507

**FREDERICKSBURG**  
448 FM 2093  
Fredericksburg, TX 78624  
830-990-4333

**FORT WORTH**  
1600 NE Loop 820  
Ft. Worth, TX 76106  
817-803-2933

**FORT WORTH**  
5742 Airport Freeway  
Fort Worth, TX 76117  
817-222-2806

- Texas First Rentals
- Texas First Trench Safety Solutions
- Texas First Rentals & Supply
- Supply Store & Distribution Center

**SUPPLY STORE & DISTRIBUTION CENTER**  
4041 Meacham Boulevard  
Fort Worth, TX 76117  
817-581-1344

**GEORGETOWN**  
2101 Airport Rd.  
Building #400, Suite B  
Georgetown, TX 78628  
737-245-5252

**GRANBURY**  
4413 E. Highway 377  
Granbury, TX 76049  
817-573-4339

**GREENVILLE**  
2625 W. I-30  
Greenville, TX 75402  
430-256-0600

**IRVING**  
3131 State Hwy 161  
Irving, TX 75062  
469-458-7977

**LAREDO**  
109 S. Aviators  
Laredo, TX 78043  
956-307-5767

**LEWISVILLE**  
1800 E. State Hwy 121  
Lewisville, TX 75056  
214-501-0580

**LITTLE ELM**  
27700 E. University Dr.  
Aubrey, TX 76227  
469-586-0230

**MANSFIELD**  
2440 Highway 287 N.  
Mansfield, TX 76063  
817-473-2420

**PFLUGERVILLE**  
16017 N. IH 35  
Pflugerville, TX 78660  
512-994-2257

**ROUND ROCK**  
775 County Road 118  
Hutto, TX 78634  
737-702-5900

**SAN ANTONIO**  
5246 Tacco Drive  
San Antonio, TX 78244  
210-960-4810

**SAN ANTONIO**  
3206 S. WW White Rd  
San Antonio, TX 78222  
210-523-1256

**SAN ANTONIO**  
4715 Rittiman Road  
San Antonio, TX 78218  
210-268-1001

**SAN ANTONIO**  
15242 Tradesman  
San Antonio, TX 78249  
210-802-4151

**SAN MARCOS**  
6215 S. IH 35  
San Marcos, TX 78666  
512-956-5499

**SAN MARCOS**  
151 Industrial Fork  
San Marcos, TX 78666  
737-248-1800

**THREE RIVERS**  
3246 N. Hwy 37 Access  
Three Rivers, TX 78071  
361-265-4443

**TYLER**  
7720 US Hwy 69 N.  
Tyler, TX 75706  
903-405-4825

**VAN ALSTYNE**  
14585 US Highway 75  
Van Alstyne, TX 75495  
903-627-2119

**VICTORIA**  
203 Holt Road  
Victoria, TX 77905  
361-881-4677

**WACO**  
3118 Gholson Road  
Waco, TX 76705  
254-218-3344

**WAXAHACHIE**  
6820 N. IH 35 E.  
Waxahachie, TX 75165  
469-242-2272

**WESLACO**  
725 E. State Hwy 83  
Weslaco, TX 78596  
956-413-8668

**WILLOW PARK**  
4500 E. Interstate 20  
Service Rd S.  
Willow Park, TX 76087  
817-310-9595

**WYLIE**  
1211 S. Highway 78  
Wylie, TX 75098  
469-326-0500

For our latest branch openings, go to [TexasFirstRentals.com](https://TexasFirstRentals.com)



844-TxFirst  
(844-893-4778)