

WE MAKE YOUR JOB EASIER

TEXAS ★ FIRST



2015 RENTAL FLEET

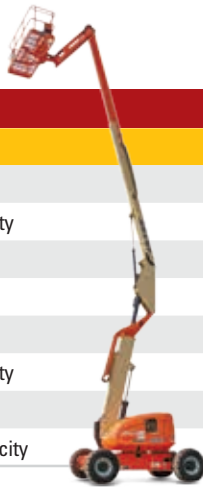
844-TxFirst
(844-893-4778)

TexasFirstRentals.com



Aerial, Dirt, Power & Whatever It Takes.

AERIAL WORK PLATFORMS



BOOM LIFTS

Item	Description
JLG 450AJ	45' Height, 25' Reach, 550 lb Capacity
JLG 460SJ	46' Height, 39'7" Reach, 600 lb Capacity
JLG 600AJ	61' Height, 40' Reach, 507 lb Capacity
JLG 660SJ	67' Height, 57' Reach, 507 lb Capacity
JLG 860SJ	86' Height, 75' Reach, 507 lb Capacity
JLG T350	35' Height, 18'8" Reach, 500 lb Capacity
JLG T500	50' Height, 30' Reach, 500 lb Capacity
JLG E300AJP	29'5" Height, 20'1" Reach, 500 lb Capacity

SCISSOR LIFTS

Item	Description
Genie GS-1930	25' Height, 500 lb Lift Capacity
Genie GS-2632	32' Height, 500 lb Lift Capacity
Genie GS-3246	38' Height, 700 lb Lift Capacity
Genie GS-3232	38' Height, 500 lb Lift Capacity
Genie GS-2669RT	32' Height, 1,500 lb Lift Capacity, Rough Terrain
Genie GS-3369RT	39' Height, 1,000 lb Lift Capacity, Rough Terrain



AIR COMPRESSORS & AIR TOOLS

COMPRESSORS

Item	Description
Sullair 185 CFM	Towable, 185 CFM @ 80-125 PSI
Sullair 375 CFM	Towable, 375 CFM @ 80-125 PSI



AIR TOOLS

Item	Description
Sullair MPB-60A	Paving Breaker, 70 lbs, 1,360 blows/min.
Sullair MPB-90A	Paving Breaker, 92 lbs, 1,380 blows/min.
Sullair MRD-55	Rock Drill, 56 lbs, 1,650 blows/min.
Sullair MRB-8	Rivet Buster, 30 lbs, 1,140 blows/min.



MATERIAL HANDLING EQUIPMENT

TELEHANDLERS

Item	Description
Cat TH255C	74 Hp, 11,045 lbs, 10'8" Reach, 5,512 lb Rating
Cat TL642C	99 Hp, 21,245 lbs, 42' Reach, 6,500 lb Rating
Cat TL943C	111 Hp, 26,525 lbs, 43' Reach, 9,000 lb Rating
Cat TL1055C	142 Hp, 34,160 lbs, 55'1" Reach, 10,000 lb Rating
Cat TL1255C	142 Hp, 35,860 lbs, 54'3" Reach, 12,000 lb Rating



FORKLIFTS

Item	Description
Heli CPYD25	5,000 lb Capacity, 185" TSU Mast, Side Shift Carriage



CRANES

Item	Description
Broderson IC-80-3F	17,000 lbs
Broderson IC-200-3F	30,000 lbs



ROLLERS & COMPACTION

PLATE COMPACTOR

Item	Description
Wacker WP 1550AW	190 lbs, 19.5" x 23" Plate Size



VIBRATORY RAMMERS

Item	Description
Wacker BS 60-4As	11" x 13.2" Shoe Size, 680 blows/min.



WALK BEHIND TRENCH ROLLER

Item	Description
Wacker RTx-SC2	32" Drum Width, 1,560 lbs, Remote



ASPHALT COMPACTORS

Item	Description
Cat CB24B	32.7 Hp, Double Drum, 47", 6,003 lbs
Wacker RD12A-90	35" Drum Width, 1,130 lbs



VIBRATORY SOIL COMPACTORS

Item	Description
Cat CS44	100 Hp, Single Drum, 66", 14,875 lbs
Cat CS54B	130 Hp, Single Drum, 84", 23,900 lbs



EARTHMOVING EQUIPMENT

SKID STEER LOADERS

Item	Description
Cat 226B3	1,500 lb Capacity, 56 Hp
Cat 262D	2,700 lb Capacity, 73 Hp



COMPACT TRACK LOADERS

Item	Description
Cat 259D	73 Hp, 2,900 lb Capacity
Cat 289D	73 Hp, 3,800 lb Capacity



BACKHOE LOADERS

Item	Description
Cat 415F2	68 Hp, 14.3' Dig Depth
Cat 416F	87 Hp, 14.3' Dig Depth
Cat 416F2	87 Hp, 14.3' Dig Depth
Cat 420F2	93 Hp, 14.3' Dig Depth



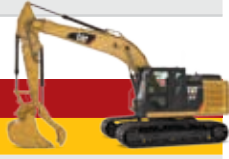
WHEEL LOADERS & INTEGRATED TOOL CARRIERS

Item	Description
Cat 926M	148 Hp, 28,742 lbs, 2.5-3.CYd Bucket
Cat 930K/QC*	154 Hp, 28,958 lbs, 3.7 CYd Bucket



EXCAVATORS

Item	Description
Cat 303E	23.5 Hp, 7,782 lbs, 16'2" Reach, 9'0" Depth
Cat 305E2	41.8 Hp, 11,433 lbs, 18'4" Reach, 12' Depth
Cat 308E2	65 Hp, 18,519 lbs, 22'11" Reach, 15'5" Depth
Cat 312E L	90 Hp, 29,430 lbs, 28'3" Reach, 19'10" Depth
Cat 316E L	113 Hp, 38,801 lbs, 30'5" Reach, 21'7" Depth
Cat 323F L	161 Hp, 50,900 lbs, 32'4" Reach, 22'1" Depth



DOZERS

Item	Description
Cat D4K2 XL	92 Hp, 9'2" Blade Width, Ripper, 18,080 lbs
Cat D4K2 LGP	92 Hp, 10'4" Blade Width, Ripper, 18,761 lbs
Cat D5K2 XL	104 Hp, 9'2" Blade Width, Ripper, 20,534 lbs
Cat D5K2 LGP	104 Hp, 10'7" Blade Width, Ripper, 21,266 lbs



TRENCHERS

Item	Description
Vermeer RTX150	20 Hp, Walk Behind, 36" Trench Depth, 4-6" Trench Width
Vermeer RTX450	40 Hp, Ride On, 60" Trench Depth, 12" Max Trench Width



ROCKWHEELS

Item	Description
Vermeer RTX550	65 Hp, 26" Max Depth x 6" Max Cutting Width
Vermeer RTX1250	120 Hp, 40" Max Depth x 8" Max Cutting Width
Vermeer RTX1250	120 Hp, 40" Max Depth x 10" Max Cutting Width
Vermeer RTX1250	120 Hp, 40" Max Depth x 12" Max Cutting Width



STREET SWEEPER

Item	Description
Laymor SM300	8' - 3 Wheel
Laymor SM400	8' - 4 Wheel



CONCRETE & MASONRY

BUGGIE

Item	Description
MultiQuip WBH-16EF	16 cu. ft. tub, foam-filled tires



CUTOFF SAWS

Item	Description
Stihl TS420	14" Cut-Off Saw, Gas



STREET SAWS & BLADES

Item	Description
Husqvarna FS400	14" Floor Saw, Gas



ELECTRIC BREAKERS

Item	Description
Hilti TE3000-AVR	Electric Breaker, 60 lbs, 860 impacts/minute



TRUCK & TRAILER

DUMP TRUCKS

Item	Description
Ledwell	5-6 Yard Dump



WATER TRUCK & TRAILER

Item	Description
Cat CT660S	4,000 Gallon, Truck
Ledwell	2,000 Gallon, Truck
Wylie EXP-500L-S	500 Gallon Poly Tank, Towable



VACUUM TRAILER

Item	Description
Vermeer LP533XDT	580 CFM Vacuum Pump Trailer



UTILITY VEHICLES

Item	Description
Polaris Ranger Crew	R15RNA57AA, 4WD, Gas
Polaris Ranger Crew	R15RUAD1AA, 4WD, Diesel



PRESSURE WASHER TRAILER

Item	Description
Mi-T-M HS-3505-OMDK	3500 PSI Hot Pressure Washer Trailer



PUMPS

PUMPS

Item	Description
Wacker PS2 500	2" Submersible Pump
Wacker PT2A	2" Trash Pump
Wacker PT3A	3" Trash Pump
Wacker PT 6LT	6" Trash Pump, Towable



WELDERS

WELDERS

Item	Description
Miller 325 Trailblazer	300 AMP, Diesel



LIGHT TOWERS & GENERATORS

GENERATORS	
Item	Description
Wacker GP 5600A	5.6kW, 120/240V, 1 Phase
Cat XQ30N	30kW @ 208, 240 or 480 Volts, 3 Phase or 240 Volt, 1 Phase
Cat XQ60N	60kW @ 208, 240 or 480 Volts, 3 Phase or 240 Volt, 1 Phase
Cat XQ100N	100kW @ 208 or 480 Volts, 3 Phase
Cat XQ200N	200kW @ 208, 240 or 480 Volts, 3 Phase



LIGHT TOWERS	
Item	Description
Allmand Night-Lite Pro II	Towable, Four 1250 watt fixtures, 30' Mast



POWER ACCESSORIES	
Item	Description
ATI Spider Box	CEP-6506-50A 125/250V
ATI Power Cord	30-COL-01918-6/3 8/1 SEOW



OUR BRANCH LOCATIONS

- SAN ANTONIO**
 5246 Tacco Drive
 San Antonio, Texas 78244
 210-960-4810
- CORPUS CHRISTI**
 435 Flato Road
 Corpus Christi, Texas 78405
 361-949-5240
- PFLUGERVILLE**
 16017 N. IH 35
 Pflugerville, Texas 78660
 512-994-2257
- WACO**
 3118 Gholson Road
 Waco, Texas 76705
 254-218-3344

OPENING IN 2015:

- DALLAS/FORT WORTH**
(Multiple Locations)
- SAN MARCOS**
- TEMPLE**
- WESLACO**



For our latest branch openings, go to our website TexasFirstRentals.com



Aerial, Dirt, Power & Whatever It Takes.

844-TxFIRST
(844-893-4778)

© 2015 Texas First Rentals

Equipment specifications, availability, and rental rates are subject to change.

© 2015 Caterpillar All rights reserved. CAT, CATERPILLAR, their respective logos, "Caterpillar Yellow," the "Power Edge" trade dress as well as corporate and product identity used herein, are trademarks of Caterpillar and may not be used without permission.
www.cat.com www.caterpillar.com